

AT-LPF-36HC

2022-3-21

DC-36GHz Low Pass Filter, 2.4mm



Product Overview

AT Microwave offers high performance coaxial filter from low frequency to 67GHz, including BPF-Band Pass Filter, LPF-Low Pass Filter and HPF-High Pass Filter.

These filters are based on MMIC technology with small size and fast delivery time. Both RF1 and RF2 can be used as Input or output port. Other connector is available according to request.

More information, please visit www.atmicrowave.com

Advantages

- ✓ Low Insertion Loss
- ✓ Good Return Loss
- ✓ High Stop Band Suppression
- ✓ Sharp Roll-Off

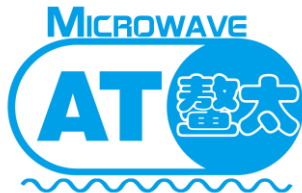
Application

- ✓ Automotive Radar Test
- ✓ FOD (Foreigner Objects Debris)
- ✓ Test Equipment
- ✓ ROF (RF Over Fiber)
- ✓ Radar System

Key Features

| Parameter | Min | Typical | Max |
|-------------------------|------|----------|--------|
| Passband Frequency | | DC-36GHz | |
| Passband Insertion Loss | | -2.0 dB | -3.5dB |
| Passband Return Loss | -8dB | -15 dB | |
| Rejection@ 44-50GHz | -20 | -25dB | |
| Spec Temp | | 25C | |





AT-LPF-36HC

Coaxial Low Pass Filter

Mechanical Information

| Item | Description |
|---------------|--------------|
| RF1 Port | 2.4mm Female |
| RF2 Port | 2.4mm Male |
| Case Material | Brass |
| Finish | Gold Plated |
| Weight | 25g |
| Size: | See outline |

Absolute Maximum Ratings Table

| Parameter | Value |
|-----------------------|--------------|
| RF Power | +30dBm |
| Operating Temperature | -40 to +85C |
| Storage Temperature | -65 to +150C |

Part Number Selection Guide

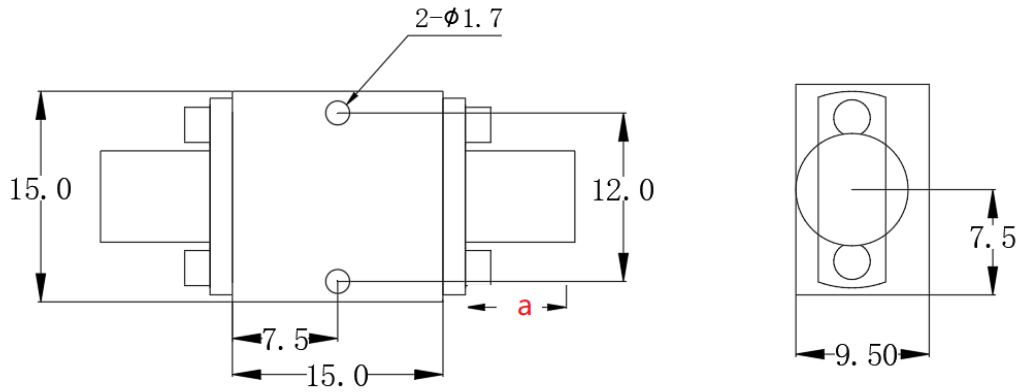
| Item | Description |
|----------------|----------------------------|
| Part Number | In Default, Female to Male |
| Part Number-FF | RF1=Female, RF2=Female |
| Part Number-MM | RF1=Male, RF2=Male |

Test Result

Performance may vary slight from unit to unit.
To be added.



Dimension (mm)



| | <26.5GHz | <40GHz | <50GHz | <67GHz |
|------------|----------|--------|--------|--------|
| Connector | SMA | 2.92mm | 2.4mm | 1.85mm |
| Lenth of a | 9.4mm | 9.5mm | 10.8mm | 11.3mm |

Note: Female Default. Contact with us for other types.

